



SAGE

— ON PEONI ROAD —



There is more to
Luxury



design story

Our inspiration for this project was drawn from our experiences of living in different developments and understanding the needs of a growing family. In order to create homes with a special feel to them, whilst incorporating practical living with aesthetics, we worked very closely with our architect prior to commencing the building work. Great design is the key and this project was designed with the potential occupier in mind.

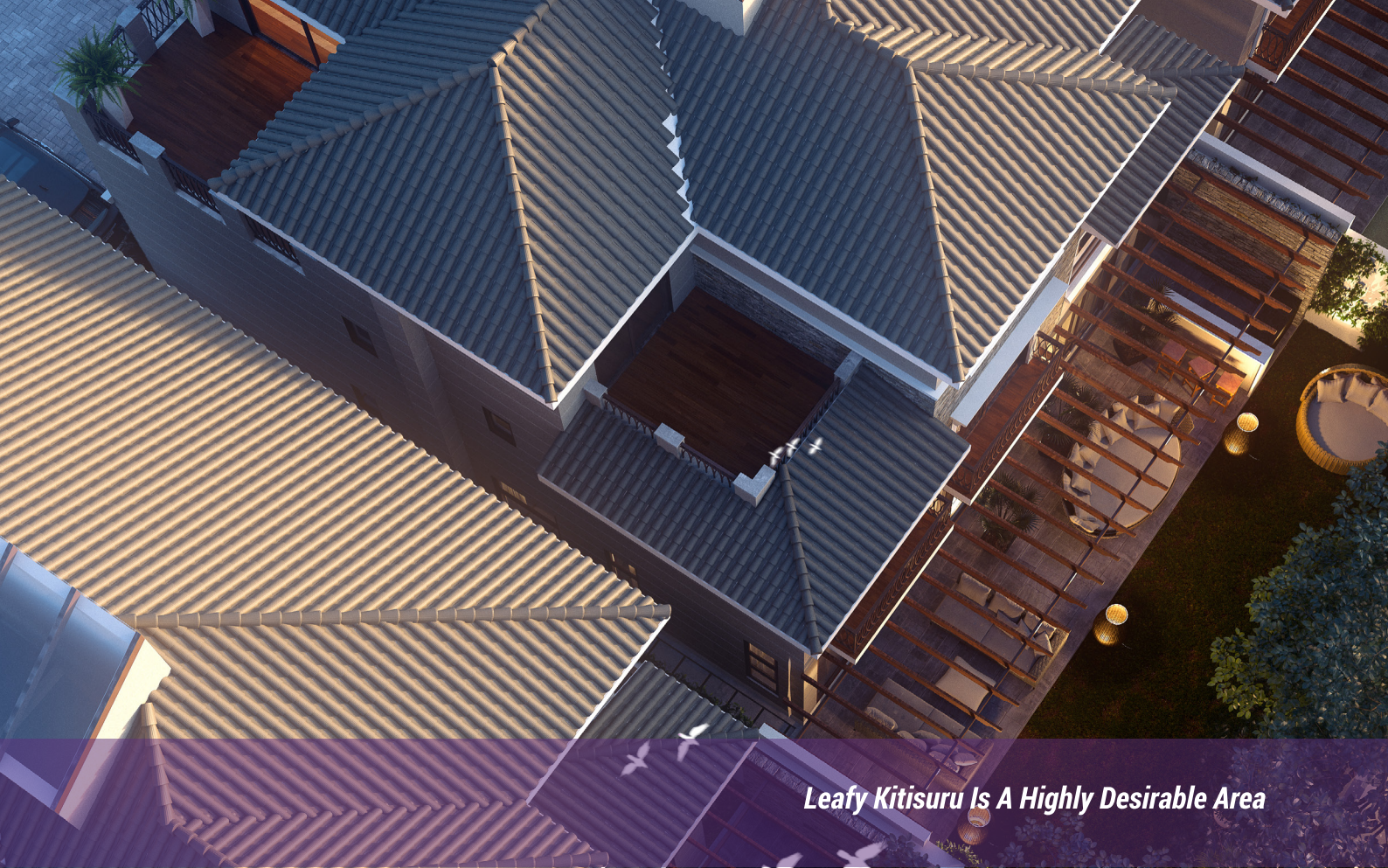
Featuring Luxury three-storey designs, 'Sage on Peponi Road' offers elegant open concept single-family homes conveniently located along Peponi Road in the Kitusuru neighborhood overlooking the lush Karura Forest.

This intimate enclave of luxury single-family homes offers a perfect blend of luxury and casual lifestyle with an array of timeless features, generous open living spaces, and striking panoramic views of the Karura Forest.



**luxury in every
square foot.**





Leafy Kitisuru Is A Highly Desirable Area



our project

'Sage on Peponi Road' is a development of 12 Luxury single-family homes in one of the most desirable neighborhoods of Kitisuru. Each home consists of 3 levels of beautifully designed spaces to maximize the utilization of every square foot within and outside your house. Luxury is noticed in the details of the design of the house. Every item (be it your kitchen or your flooring or 100 others) which goes in building this dream home is hand-picked by the developers to ooze class and make you a proud owner of your home. Services like electric and plumbing works are well thought out to ensure you don't have to worry about them until you see your children and grandchildren grow old in this house.

Sage's elegance is only matched by its convenience and proximity to the area's finest amenities including coveted international schools, neighborhood parks, renowned shopping centers (Westgate, Sarit Centre, Village Market), full-service hospitals, and more. At Sage, enjoy the elegant yet family-friendly atmosphere that you can be proud to call home.

Each house has a total area of 8,500 sq.ft. of your personal space. A typical house comprises of 5 bedrooms and 5.5 bathrooms, which includes 2 master-bedrooms, 2 SQ's, 3 car-parking slots, 4 kitchens (including 2 fully equipped kitchens) and many more spaces. (refer to factsheet for more info)



desirable
address



With a Host of Schools, Malls & Hospitals in Short Distance.



*A Stunning Development Of 12 Luxury Contemporary Homes Situated At
Arguably Nairobi's Most Desirable Address.*

cozy
ensuite.



These 12 beautifully curated houses, located right along Peponi Road, are secured by state-of-the-art security systems and a highly efficient team on the ground. Along with the CCTV cameras and modern technology, the property also features a double gated entrance for added security.

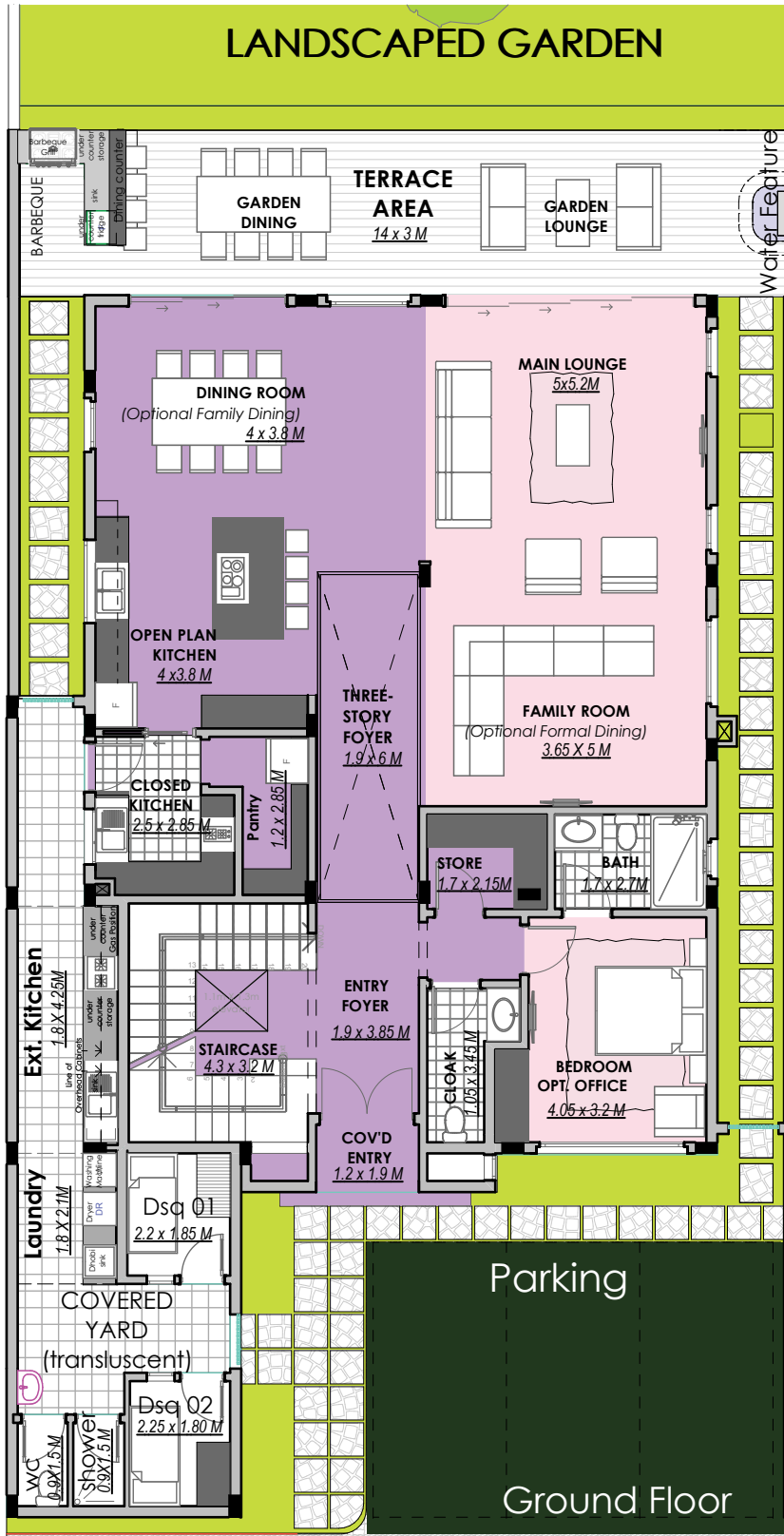
The entire property also has full power back-up to ensure you have no interruptions while you continue to enjoy the features of your home or while you host parties for your friends.

intelligent &
functional.

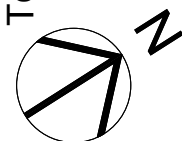


This is the core of the house and is very intelligently designed to separate the entertainment and working spaces. The central lobby works as a natural partition allowing you to cook, wash, walk up & down on one side, while the other side is dedicated to host your guests & family.

The Ground floor opens into a beautiful outdoor space comprising of an entertainment deck and a well-manicured garden for you to host those wonderful Sunday barbeques.

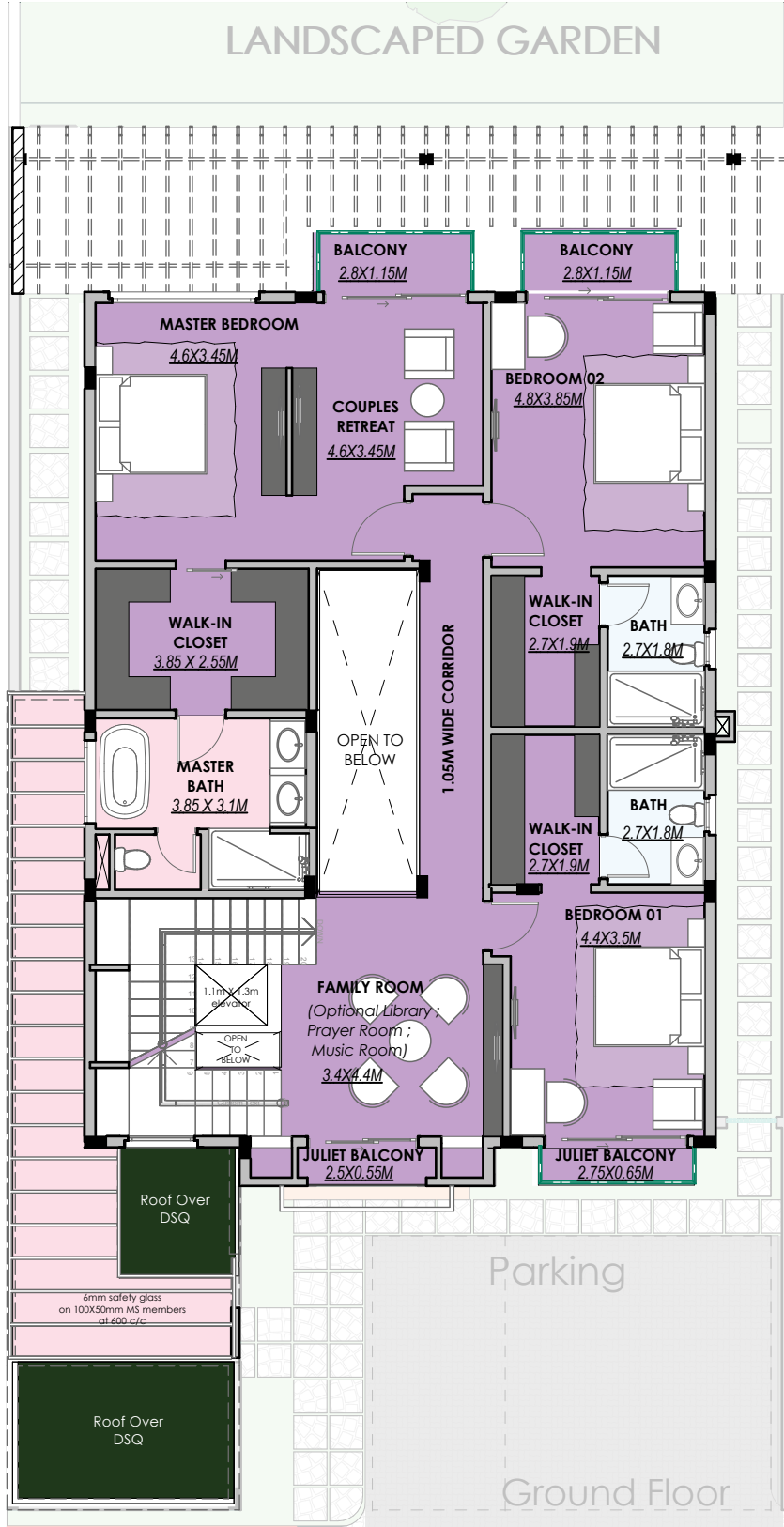


Total Plinth Area: 217 m² (Excl. Terrace) ■ Green & Entertainment Area: 138 m²
 Terrace Area: 42 m² ■ Parking Area: 39 m²

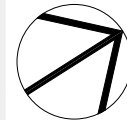




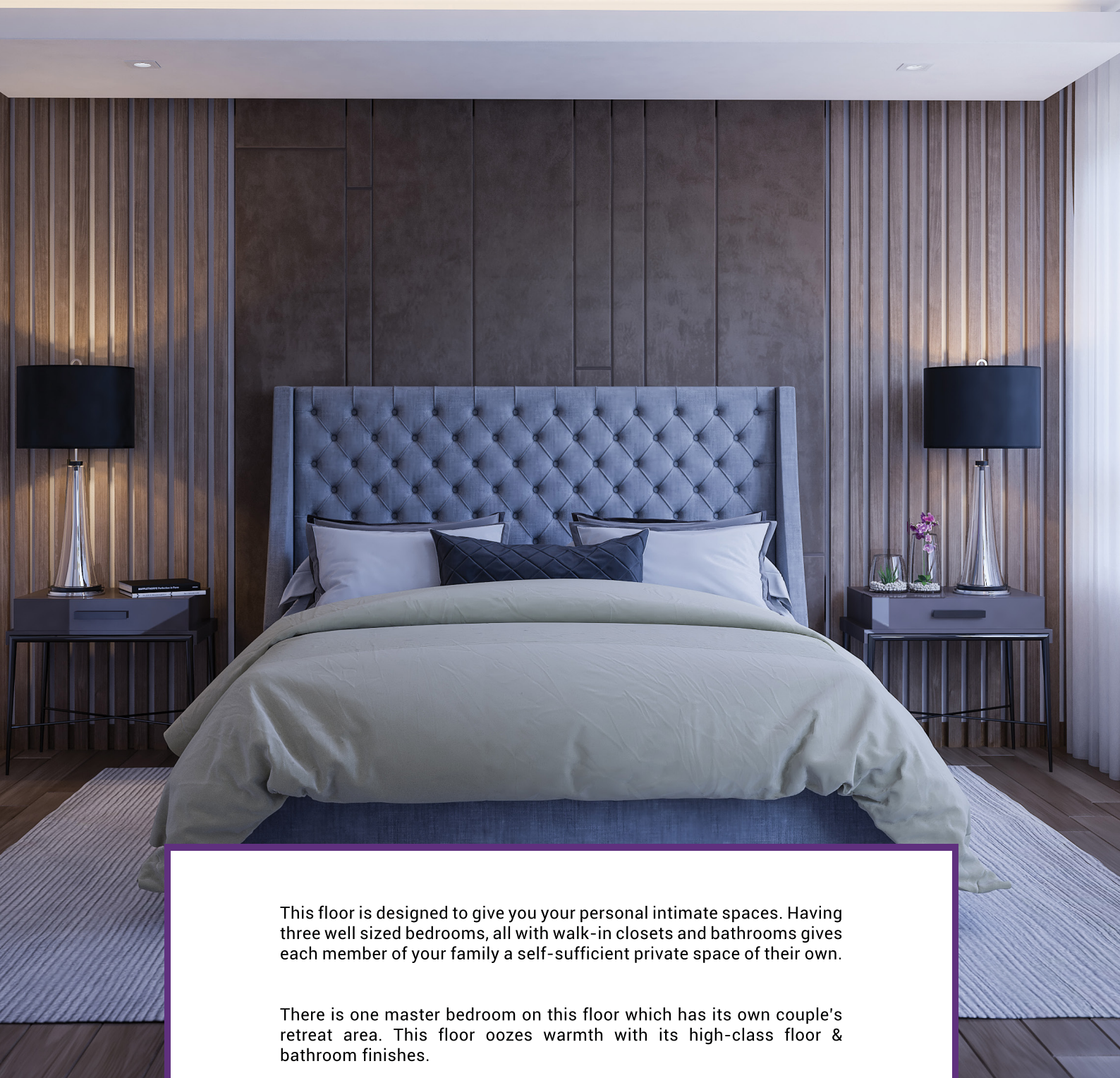
first floor



Total Plinth Area: 170 m²
Balcony Area: 10 m²



personal
intimate
spaces.



This floor is designed to give you your personal intimate spaces. Having three well sized bedrooms, all with walk-in closets and bathrooms gives each member of your family a self-sufficient private space of their own.

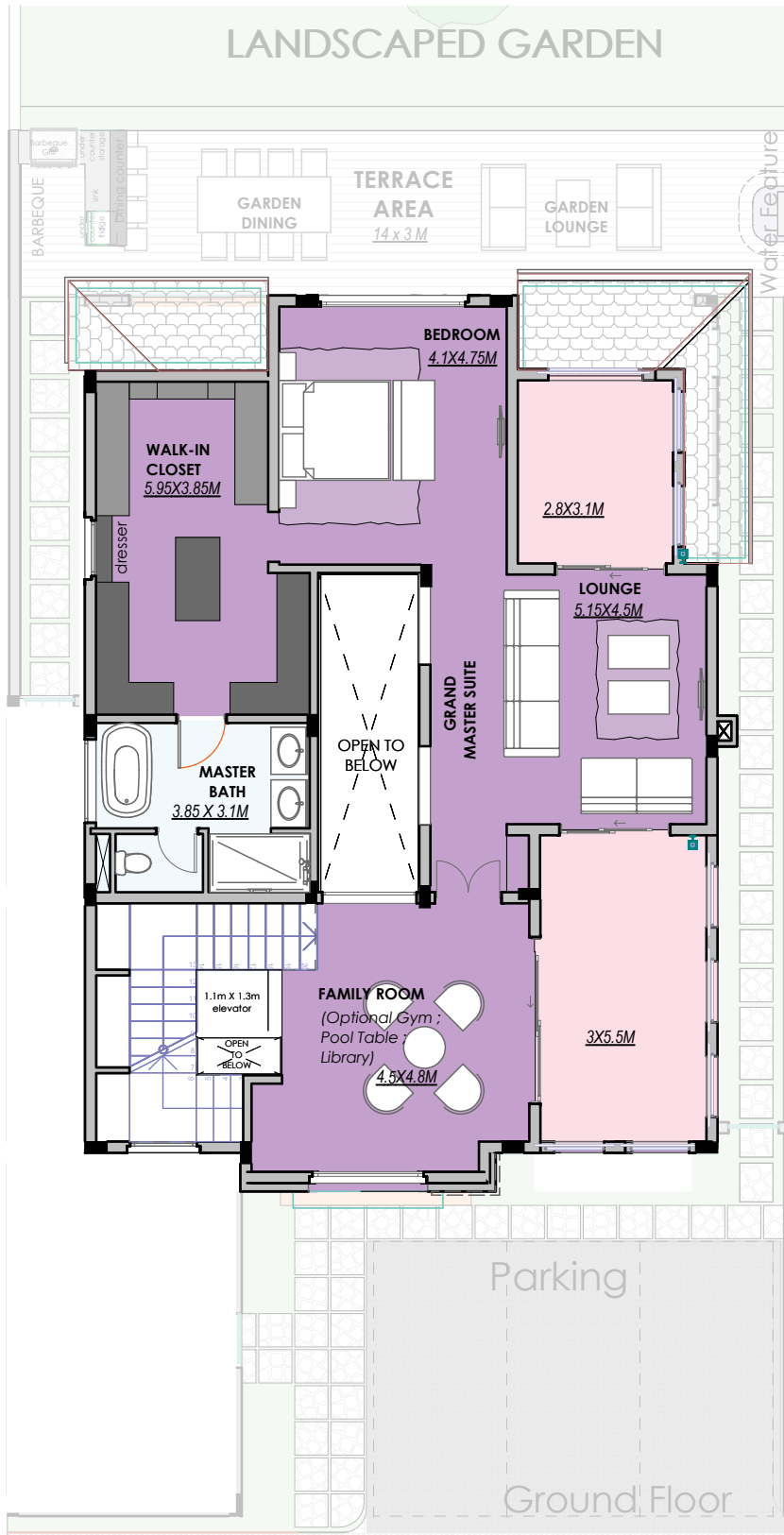
There is one master bedroom on this floor which has its own couple's retreat area. This floor oozes warmth with its high-class floor & bathroom finishes.

home within a home.

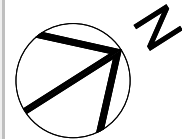


This floor works as a home within a home for the main couple of the house. With its own lounge and terrace, the couple can host private parties here without disturbing anyone else in the house.

The couple has their own private balcony to cuddle up to the views of the beautiful Karura Forest. The expansive walk-in closet promises to provide you with enough space to fit all your precious belongings and we are confident you will love it.



Total Plinth Area: 142 m²
Balcony Area: 30 m²





kitchen details

Chef's Kitchen

- Fully-fitted kitchen with high-class cabinets and high-quality appliances.
- Functional Designs creating useful spaces both below and above your working platforms
- Good-sized space on working platform made of granite or similar materials.
- Easy maneuverability across the entire kitchen.

Inside Kitchenette

- Fully-fitted kitchen with high-class cabinets and high-quality appliances.
- Functional Designs creating useful spaces both below and above your working platforms
- Good-sized space on working platform made of granite or similar materials.
- Easy maneuverability across the entire kitchen.

Yard Kitchen (Provision)

- Large working platform made of granite or similar materials for you to plan an external kitchen.
- Multiple utility of this kitchen - heavy cooking, cooking for house-help, caterers cooking area for parties, etc.

BBQ Kitchen (Provision)

- A provision for you to set up your BBQ or Koroga Kitchen.
- Beautifully stone-cladded kitchen, which doubles into an external Bar area.



kitchen is
the heart
of home.





house details

Wardrobes

- There are 4 walk-in closets in the house, all designed to optimize storage spaces for your cherished belongings.
- These elegantly designed closets are very modern and have a good mix of open and closed spaces.

Flooring

- Porcelain tiles at the Entrance, Kitchen, Dining and Bathrooms.
- Engineered wooden floor in the Lounges.
- Laminate wooden floor in the Bedroom and Closets.
- Ceramic or similar tiles for outdoor Terraces.

Bathroom

- High-quality European Bathroom Fittings & Accessories.
- Environmental friendly solar-heated water supply in all Bathrooms.
- Shower cubicles in all bathrooms.
- Bathtub in both Master bathrooms.

Windows

- Booth quality aluminium frame with tempered or toughened glass windows.





house details



Doors

Outdoor Terrace Doors

- Booth quality aluminium frame with tempered or toughened glass sliding doors.
- High-quality fittings and locks.

Bedroom and Bathroom Doors

- MDF/HDF doors Laminate Doors.
- High-quality fittings and locks.

External Security Doors

- Steel gates.

Staircase

- Modern steel and timber railing.
- Floating steel and timber steps.

Ceiling

- Elegant gypsum ceiling through the house (internal).
- Well-planned lighting with led-downlights and led-panels.

Roof

- Decra Roofing tiles.

Wall Finishes

Internal Walls

- Silk Vinyl emulsion paint.

External Walls

- Permaplast emulsion paint.
- Stone cladding.





fact
sheet



5.5

Bathrooms
(incl. 2 master bathrooms)



5

Bedrooms
(all ensuite)



4

Kitchens
(2 fully equipped)



4

Walk-in Closets



6

Lounges
(incl. 1 outdoor lounge)



3

Car Parking



3

Dining Areas
(incl. 1 outdoor dining)



6

Terraces
(incl. 1 private couples terrace)



2

SQ's



2

Master Bedrooms

Total Area

8,500 sq.ft.

Outside Entertainment Area

2,000 sq.ft.


Inside your house

6,500 sq.ft.

Ready to Buy Your
Dream Home?



 **JIVA**
REALTY
Jiva Realty Limited

 +254 768 125 838

sales@jivarealty.com
www.jivarealty.com

Particulars Not Warranted

This material is condensed for general marketing purposes only and may not be complete or accurate. Jiva Realty Limited (including its employees and agents) will not accept any liability suffered or incurred in any way whatsoever (directly or indirectly) by any person arising out of or in connection with any reliance on the content of or information contained herein.