



PROSPEROUS LIVING



A COLLECTION OF 58 HIGH-END
CONTEMPORARY APARTMENTS

SUNSTONE.

PICTURE PERFECT PROPERTY.

The definition of elegant living, this magnificent collection of two, three and four bedroom apartments sit at the heart of Westlands. Sunstone is located along General Mathenge Road overlooking the lush Spring Valley and Karura Forest neighborhoods.

These stylish homes situated along the Mathare River, feature a residents gymnasium, covered infinity swimming pool, dedicated garden area next to the river, which can be used for parties, BBQ, games or even camping.

Project Highlights

- 15 floors of 58 well designed apartments.

Bedroom Apartment	Units	sq.ft
2 Bed Apart.	28	1,700
3 Bed Apart.	28	2,400
Penthouse A	1	4,800
Penthouse B	1	3,400

- 120+ parking spaces spread over 3 floors.
- Road/Entrance facing & river facing apartments.
- Maximum ventilation & natural light.
- Sunstone offers 65% of open to sky & green space.
- A total of 12,500+ sq ft dedicated for the entertainment area including gymnasium, swimming pools.





LOCATION SPEAKS FOR ITSELF. LIVING AT THE HEART OF IT.

Situated on the banks of Mathare River along General Mathenge Road, Sunstone is strategically positioned close to world-class health-care facilities, international schools, shopping & banking halls. In recent years, General Mathenge has become home to many families looking for luxury and accessibility.

Sunstone connects very easily with most prominent neighborhoods like Muthaiga, Gigiri, Kitusuru, Kyuna, Loresho, Runda, Parklands; hence making it a central location to have your home.



Easy & Fast Access

Destination	Time
Hospitals	
MP Shah Hospital	8 min
Aga Khan Hospital	12 min
Schools	
Oshwal Academy	6 min
Peponi School	8 min
ISK	10 min
Shopping	
Sarit Center Mall	4 min
Westgate Mall	6 min



DISCOVER AN INNER ELEGANCE. BEST OF CLASS APARTMENTS.

Sunstone is built with no short-cuts, no compromises and the quality throughout is only of the highest standards.

Modern, yet filled with character, the apartments are built with only the best products and materials, drawing on the expertise of the most creative and dynamic design professionals available.

The unmatched levels of quality within Sunstone make the apartments stand out from the crowd as a shining example of what can be achieved if you combine vision with first-rate construction and premium design.

The building also houses a huge entertainment floor allowing you to get your daily workout, take a stroll, walk your dog, organize a barbeque or even pitch a tent – all within the premises of your own building.





GRAND LIVING. HOST ENDLESS PARTIES.

The unique, spacious and comfortable apartments thoughtfully integrate modernity with functionality. The enticing living spaces in Sunstone are the focal point of each apartment as they offer you a personal retreat where you can relax and enjoy with your family as well as an elegant dwelling to host intimate parties for your friends.

The dining area and lounge flows into a large deck, built to entertain yourself and your guests. The layout works very well separating your entertainment areas from your personal spaces. The deck comes with highly durable, anti skid flooring to ensure durability and safety.







EFFICIENCY TEAMS UP WITH AESTHETICS IN THE KITCHEN.

Kitchens aren't just a place to prepare, cook and store food – they are the heart of your home. We understand this – hence the kitchen comes fully-fitted with very solid cabinetry fixed with top notch fittings and accessories.

State-of-the-art appliances and solid work-surfaces complete the kitchen to give a very modern and functional look. The living area and kitchen is tiled with designer ceramic tiles to give a contemporary look to your overall apartment.



ROOM TO RELAX.

Bedrooms in Sunstone are designed to give intimate and comfortable spaces not just to rest but also to enjoy your own personal space.

The bedrooms are spacious and filled with a lot of natural light – the master bedroom even comes with a private balcony. The bedrooms come with walk-in-closets and en-suite bathrooms so each resident can have complete privacy. The bedrooms have oak wood like laminate flooring to give you a warm and welcoming feeling.

As a place where many people like to unwind with a refreshing shower, we have made every effort to ensure the bathroom comes with high-end fittings. The flooring and walls are fully tiled with high-quality ceramic tiles.





THE FLOOR WITH COMPLETE PRIVACY.

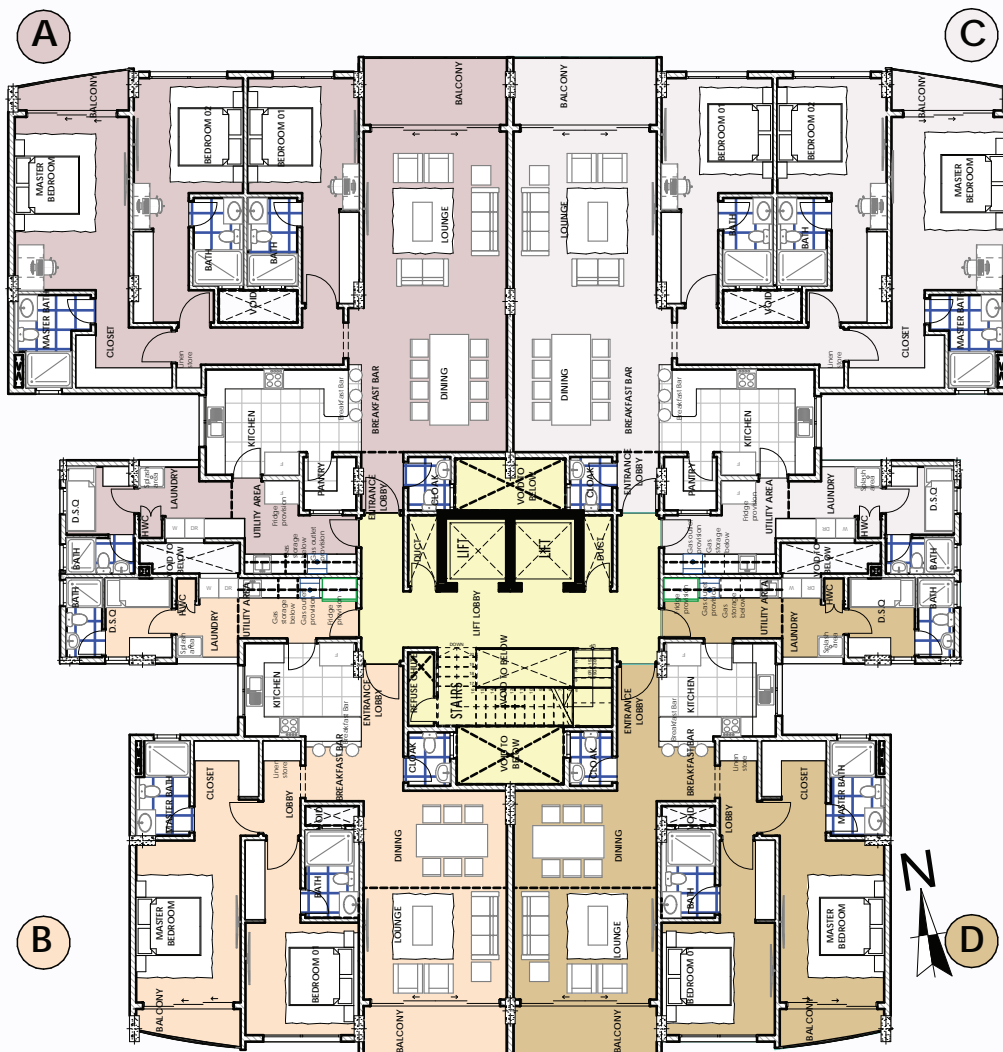
Privacy

Each apartment is at good distance from the others hence no direct view inside.

Security

The provision of Video door intercom system as security measure for the residents to allow entry for the approved visitors.

Typical Floor



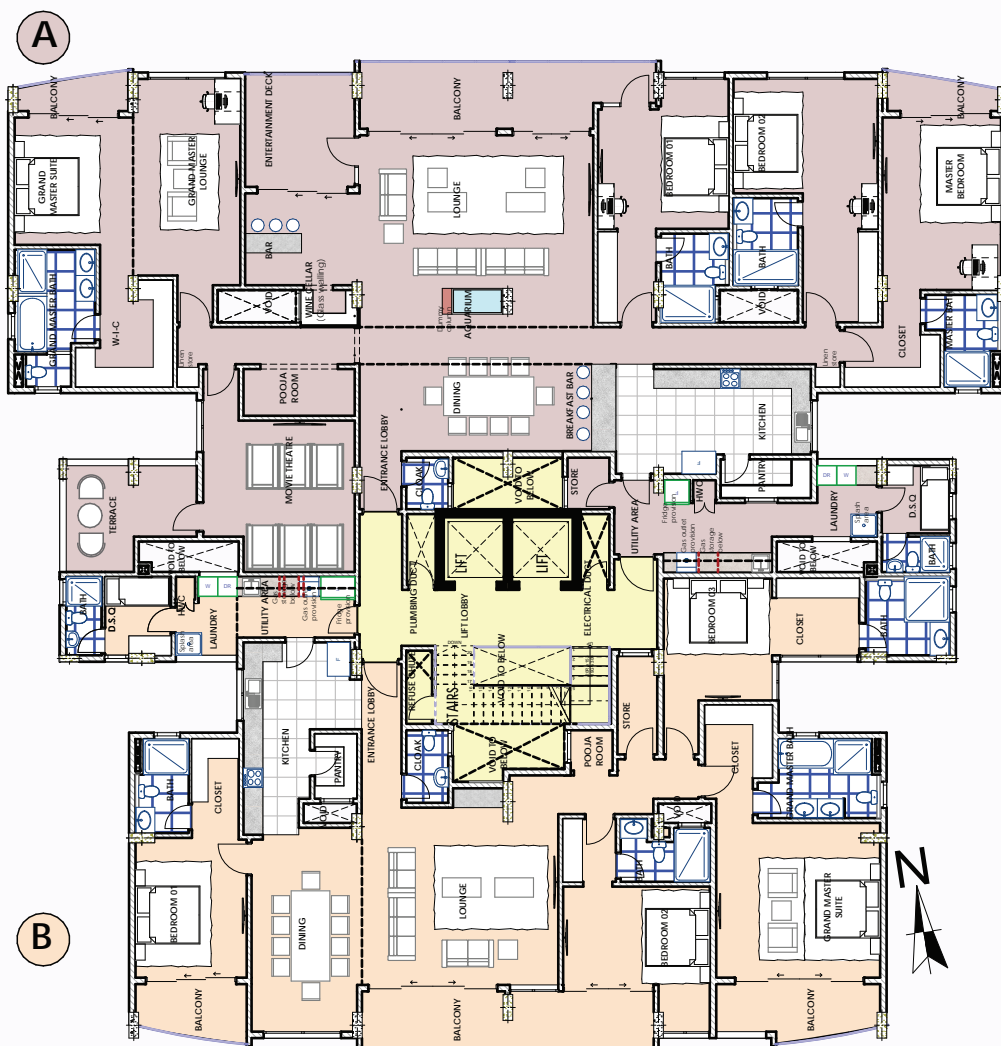
Grand Lobby

The lobby of every floor will give a feeling of lavishness to the residents and their guests.

Elevator

With 2 nos. of high-speed elevators, the residents can cover the distance in the fastest manner no matter which floor they live in.

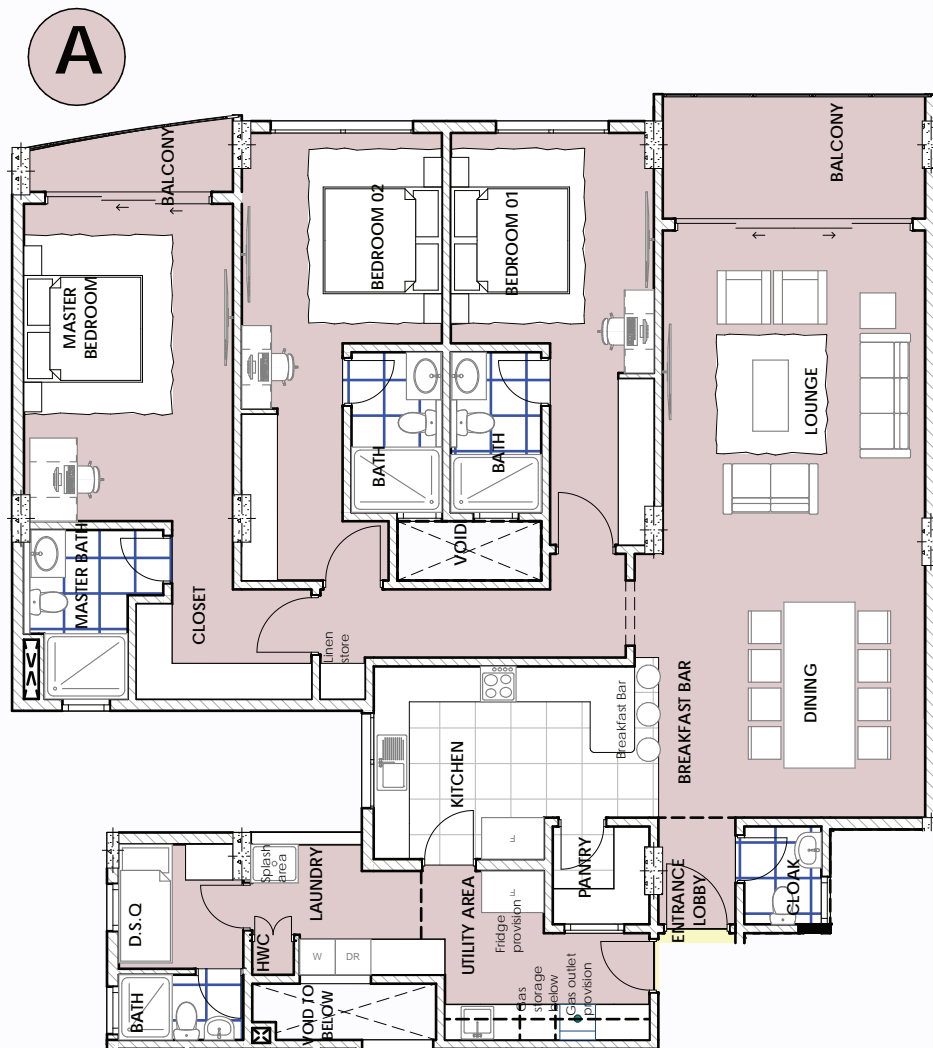
Penthouse Floor



Apt A & C – 3 Bedroom

Apartment Details

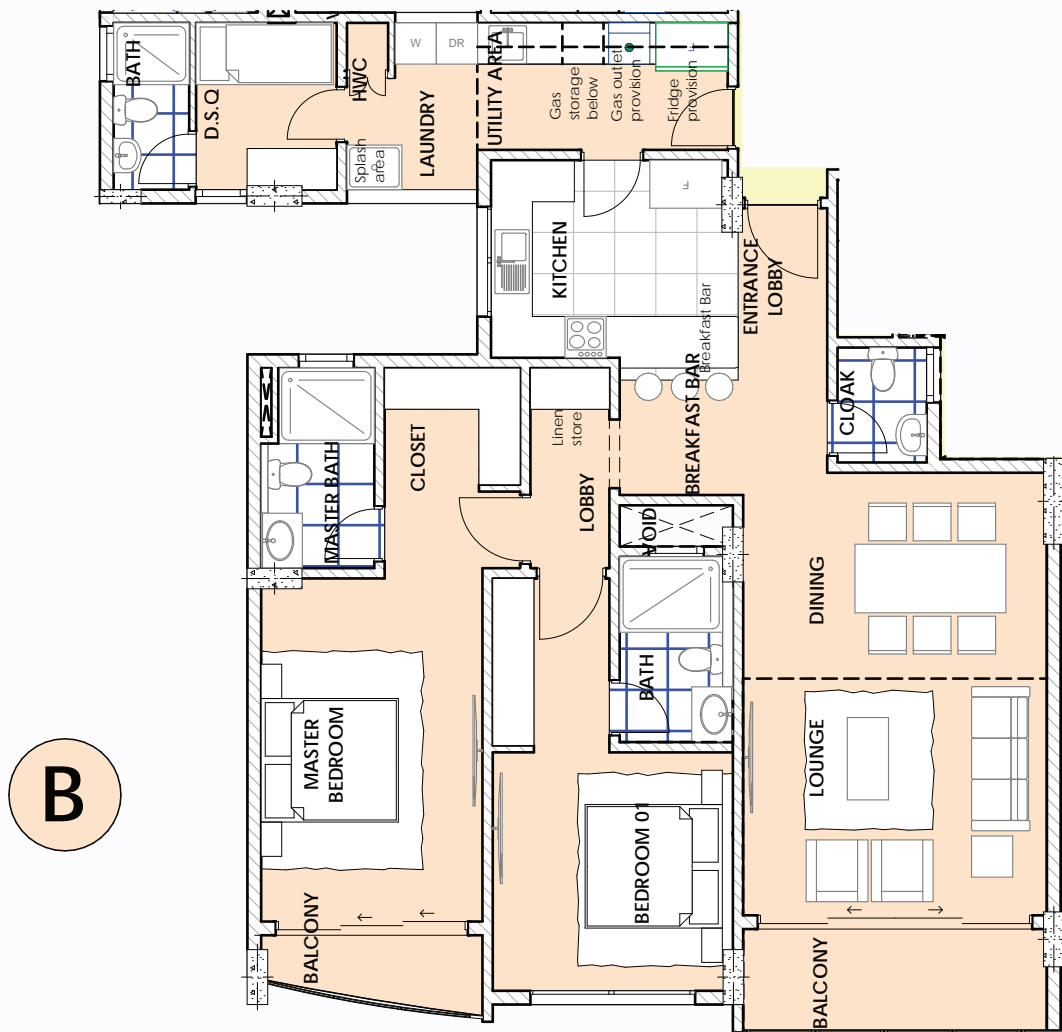
Total Apartment Area in Sq. Ft	2,400
Apartment Area including Walls	2,231
Apartment Area less Walls	1,923
Parking	2



Apt B & D - 2 Bedroom

Apartment Details

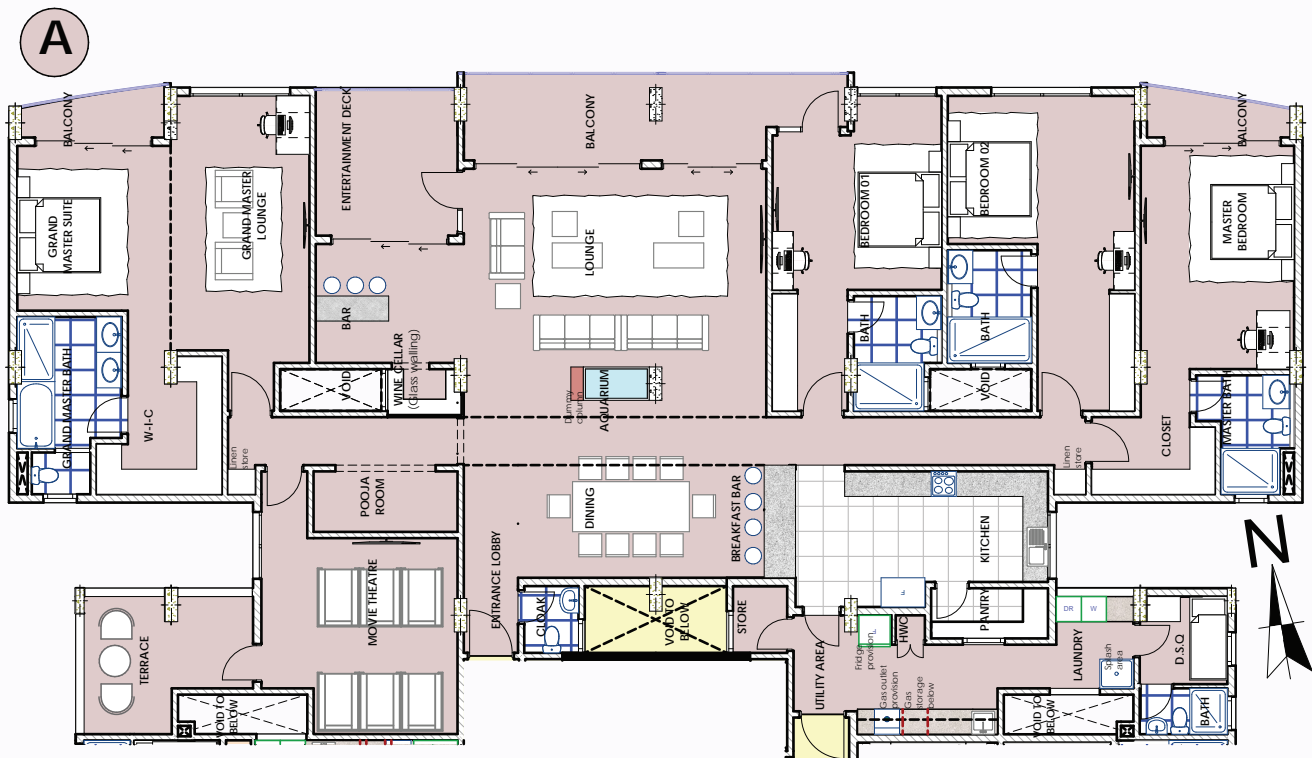
Total Apartment Area in Sq. Ft	1,700
Apartment Area including Walls	1,573
Apartment Area less Walls	1,346
Parking	2



Penthouse A

Apartment Details

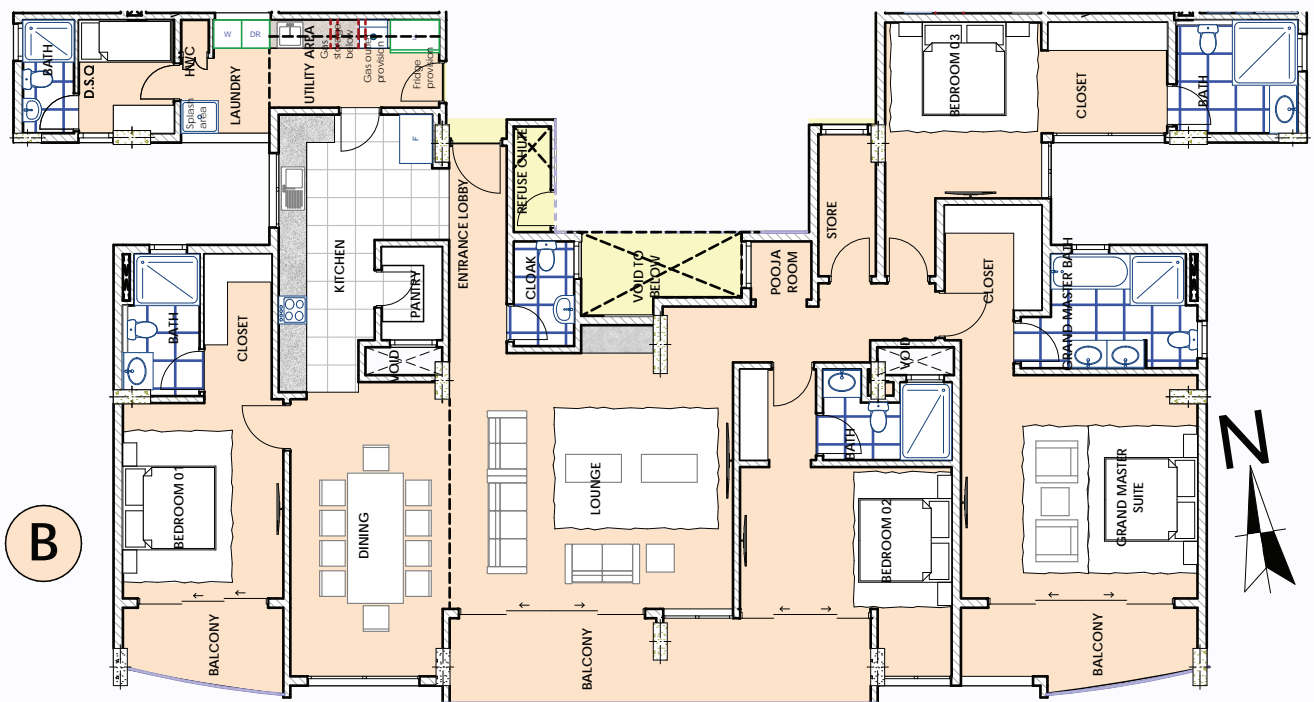
Total Apartment Area in Sq. Ft	4,800
Apartment Area including Walls	4,475
Apartment Area less Walls	3,918
Parking	3



Penthouse B

Apartment Details

Total Apartment Area in Sq. Ft	3,400
Apartment Area including Walls	3,158
Apartment Area less Walls	2,728
Parking	3



EXCLUSIVE FINISHES & AMENITIES.

Kitchen

- Stylish fully fitted Kitchen with top-notch fittings, cabinetry and accessories.
- Integrated appliances including - Built-in Gas, Hob, Microwave, Oven & Water Purifier.

Flooring

- Contemporary Vitrified Ceramic tiles flowing through the living area, dining and kitchen.
- Oak wood style laminate flooring in the bedrooms.
- Ceramic tiles both on floor and wall (upto ceiling) in the bathrooms.
- Anti-slip tiles in the utility and balcony areas.

Door & Windows

- Modern UPVC or Powdered coated Aluminum Windows and Sliding Doors with top-notch fittings.

Ceiling & Walls

- Emulsion paint on the internal walls of the apartment.
- Gypsum Ceiling in some areas of the apartment with LED downlights.

Bathrooms

- European / American Taps, Mixers and Ceramics.
- Hot water availability either through solar or hot water cylinders.

Security

- Video access-control system.





PLAY AND PLAY MORE!

Entertainment

- Covered infinity swimming pool
- Gymnasium
- Steam room
- Massage room
- Entertainment deck
- Multi-purpose garden along the river.

More Amenities

- 2 nos. of high-speed passenger elevators
- Borehole water supply
- Full back-up generator
- Boundary wall electric fence
- CCTV camera system with access control system





READY TO BUY YOUR

DREAM HOME?

